

CAUTION



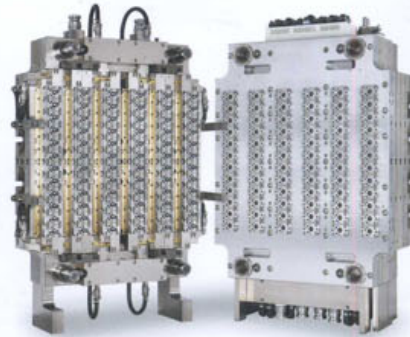
PET Series

PET Preform Series Injection Molding Machines

CAUTION



CHUAN LIH FA offers a full series of plastic injection molding machines for big, medium and small mouth PET preform production.

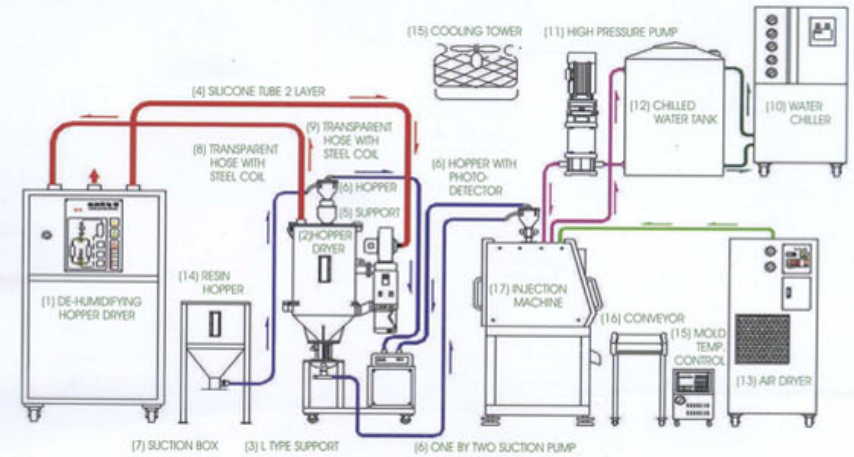


PET Series

PET Preform Series Injection Molding Machines

With extensive experience in multi-turnkey projects for our customers, CHUAN LIH FA offers a full series of plastic injection molding machines for big, medium and small mouth PET preform production. Each model is designed meet the special requirements of PET resin.

To meet various production environments, CHUAN LIH FA also offers comprehensive peripheral equipment that helps customers to produce high quality preforms. The available peripheral equipment includes: resin drying system, resin conveying system, PET preform mold with various designs and cavities, hot runner system and temperature control, chilled water and dry air system, product handling system and packing quantity control, etc.



PET Series



FEATURES:

1. High production speed. Above models perform material loading and mold clamping simultaneously. (CLF Patented No. 145402)
2. Depending on product characteristics and production requirements, the machine series is available to equip with accumulator and servo valve for high speed, high precision molding control. Contact CLF for detailed specifications.
3. To shorten the in-mold cooling time and increase productivity. An out-mold cooling device is available. (Optional)



PET Preform Series Injection Molding Machine Specifications:

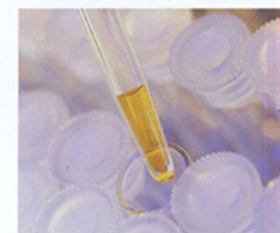
Machine Model		CLF-230TX-PET		CLF-285TX-PET		CLF-350TX-PET		CLF-400TX-PET		CLF-500TX-PET		CLF-600TX-PET		
INJECTION UNIT	UNIT	1470		2436		2436		4183		4183		6630		
Screw Diameter	mm	55	60	70	75	70	75	80	85	80	85	95	100	
Theoretical Inj. Volume	cm ³	712	847	1269	1457	1269	1457	2135	2410	2135	2410	3542	3925	
Max. Injection Pressure	Kg/cm ²	2066	1736	1920	1672	1920	1672	1959	1736	1959	1736	1872	1690	
Max. Injection Speed	mm/sec.	141	141	124	124	124	124	115	115	125	125	104	104	
Max. Injection Rate	cm ³ /sec.	336	400	477	548	477	548	579	654	628	709	742	822	
PET Max. Shot Weight	gram	744	886	1327	1523	1327	1523	2232	2520	2232	2520	3701	4101	
PET Plasticizing Rate	Kg/Hr.	81	96	123	140	123	140	166	188	166	188	249	276	
Screw Rotation Speed	RPM	128		130		130		93		93		98.5		
Nozzle Radius / Hole	mm/ mm	15 / 7		15 / 10		15 / 10		20 / 12		20 / 14		25 / 30		
Heating Zones	zone	6		7		7		8		8		10		
Heating Capacity	KW	19		24		24		35.5		35.5		49.8		
CLAMPING UNIT														
Distance Between Tie Bars	mm	560 x 560		610 x 610		670 x 670		730 x 730		810 x 810		910 x 910		
Dimension of Platen	mm	860 x 860		940 x 940		1030 x 1030		1120 x 1120		1260 x 1260		1390 x 1390		
Mold Height	mm	200 - 600		200 - 650		200 - 700		250 - 750		300 - 900		300 - 1000		
Mold Opening Stroke	mm	560		610		680		750		800		900		
Clamping Force	Ton	230		285		350		400		500		6000		
Dia. of Locating Ring	mm	160		160		160		160		200		200		
Ejector Stroke	mm	150		150		200		200		200		250		
Ejecting Force	Ton	6.2		6.2		7		7		11		13.3		
GENERAL DATA														
Pump Driving Motor	HP	75		100		100		125		135		150		
Capacity of Oil Reservoir	Liter	900		1200		1200		1600		1800		2000		
Machine Dimension	m	7 x 1.65 x 2.1		7.5 x 1.75 x 2.3		7.8 x 1.80 x 2.3		7.8 x 1.8 x 2.4		8.8 x 2.0 x 2.5		10.3 x 2.3 x 2.5		
Net Weight	Ton	11		13		16.5		17.5		28.5		41		
PREFORM SIZE AND QUANTITY:														
Preform Weight	Small Mouth	*35g	No. per shot	Estimated production (Shot/1hr)	No. per shot	Estimated production (Shot/1hr)	No. per shot	Estimated production (Shot/1hr)	No. per shot	Estimated production (Shot/1hr)	No. per shot	Estimated production (Shot/1hr)	No. per shot	Estimated production (Shot/1hr)
		*65g	4*6*8	360000*480000*610000	8*12	610000*900000	12*16	900000*1200000	24	1728000	48	3000000	48	3000000
	*120g	2*4	160000*300000	4*6*8	300000*430000*550000	6*8*12	430000*550000*800000	16	1015000	24	1450000	48	2850000	
	Medium Mouth	*70g			4*6	200000*300000	6*8	300000*400000	12	576000	16	700000	32	1350000
Big Mouth	*130g			4	200000	6	300000	8	450000	12	675000	16	900000	
								6	324000	8	420000	12	620000	

* All specifications, dimensions and design characteristics shown in this catalogue are subject to change without notice.

5Gal. PET Preform Series Injection Molding Machine Specifications:

Machine Model		CLF-500TW-PET	
INJECTION UNIT	UNIT	6630	
Screw Diameter	mm	95	100
Theoretical Inj. Volume	cm ³	3542	3925
Max. Injection Pressure	Kg/cm ²	1872	1690
Max. Injection Speed	mm/sec.	104	104
Max. Injection Rate	cm ³ /sec.	742	822
PET Max. Shot Weight	gram	3701	4101
PET Plasticizing Rate	Kg/Hr.	249	276
Screw Rotation Speed	RPM	98.5	
Nozzle Radius / Hole	mm/ mm	25 / 30	
Heating Zones	zone	10	
Heating Capacity	KW	49.8	
CLAMPING UNIT			
Distance Between Tie Bars	mm	810 x 810	
Dimension of Platen	mm	1260 x 1260	
Mold Height	mm	300 - 900	
Mold Opening Stroke	mm	1000	
Clamping Force	Ton	500	
Dia. of Locating Ring	mm	200	
Ejector Stroke	mm	200	
Ejecting Force	Ton	11	
GENERAL DATA			
Pump Driving Motor	HP	150	
Capacity of Oil Reservoir	Liter	2000	
Machine Dimension	m	9.4 x 1.95 x 2.5	
Net Weight	Ton	30	
PREFORM SIZE AND QUANTITY:			
Preform for 5Gal. Mineral Water Container	*800g	No. per shot	Estimated production (Shot/1hr)
		4	100000

PET Series



PET CAP Series Injection Molding Machine Specifications:

Machine Model		CLF-120TX-CAP		CLF-180TX-CAP		CLF-230TX-CAP		CLF-285TX-CAP		CLF-350TX-CAP		CLF-400TX-CAP		CLF-500TX-CAP		
INJECTION UNIT		416		717		1000		1470		1470		2436		2436		
Screw Diameter	mm	35	40	40	45	45	50	55	60	55	60	70	75	70	75	
Theoretical Inj. Volume	cm ³	202	263	307	389	429	530	712	847	712	847	1269	1457	1269	1457	
Max. Injection Pressure	Kg/cm ²	2057	1575	2327	1839	2322	1881	2066	1736	2066	1736	1920	1672	1920	1672	
Max. Injection Speed	mm/sec.	186	186	153	153	150	150	144	144	167	167	143	143	143	143	
Max. Injection Rate	cm ³ /sec.	179	234	192	243	238	294	342	407	396	472	552	633	552	633	
PE Max. Shot Weight	gram	146	190	222	281	310	383	514	611	514	611	916	1052	916	1052	
PE Plasticizing Rate	Cooling Time	g/sec.	9.4	12.3	14.6	18.5	14.6	17.9	30.6	36.4	34.4	40.9	58.7	67.3	58.7	67.3
	Mold Movement	g/sec.	9.4	12.3	14.6	18.5	14.6	17.9	17.4	20.7	20.9	24.8	29.3	33.6	29.3	33.6
Screw Rotation Speed	Cooling Time	RPM	228.5		272.5		213.3		274		308		324		324	
	Mold Movement	RPM	228.5		272.5		213.3		156		187		162		162	
Nozzle Radius / Hole	mm/ mm	12.7 / 5		12.7 / 5		12.7 / 6		12.7 / 8		12.7 / 8		12.7 / 8		12.7 / 8		
Heating Zones	zone	5		5		5		5		5		7		7		
Heating Capacity	KW	5.7	6.8	9.6	10.6	12.6	12.6	16.9	18.6	16.9	18.6	24.1	25.9	24.1	25.9	
Clamping Unit																
Distance Between Tie Bars	mm	420 x 420		510 x 510		560 x 560		610 x 610		670 x 670		730 x 730		810 x 810		
Dimension of Platen	mm	630 x 630		765 x 765		860 x 860		940 x 940		1030 x 1030		1120 x 1120		1260 x 1260		
Mold Height	mm	150 - 450		150 - 550		200 - 600		200 - 650		200 - 700		250 - 750		300 - 900		
Mold Opening Stroke	mm	420		500		560		610		680		750		800		
Clamping Force	Ton	120		180		230		285		350		400		500		
Dia. of Locating Ring	mm	125		160		160		160		160		160		200		
Ejector Stroke	mm	110		150		150		150		200		200		200		
Ejecting Force	Ton	5.4		5.4		6.2		6.2		7		7		11		
General Data																
Pump Driving Motor	HP	40		50		60		75		100		120		120		
Capacity of Oil Reservoir	Liter	500		700		800		1000		1400		1400		1600		
Machine Dimension	m	5.2 x 1.6 x 1.7		5.6 x 1.6 x 1.9		6.5 x 1.7 x 2.0		7.3 x 1.8 x 2.1		7.6 x 1.8 x 2.1		8.4 x 1.9 x 2.2		8.8 x 2.0 x 2.2		
Net Weight	Ton	5.6		8		10.6		13		16		21.6		26.5		

* All specifications, dimensions and design characteristics shown in this catalogue are subject to change without notice.

CHUAN LIH FA MACHINERY WORKS CO., LTD.

No. 17, Lane 360, Chung Cheng S. RD.
Yuen-kang Dist. Tainan City 71047, Taiwan
Tel: +886-6-253-2111 Fax: +886-6-253-3311, 254-8859
<http://www.clf.com.tw> E-mail: clf@clf.com.tw

ZHONG-SHAN CHUAN LIH FA MACHINERY CO., LTD.

No. 3, Nan-Tou Blvd., Nan-Tou Town, Zhong-Shan
City, Guang-Dong Province 528427, China
Tel: +86-760-311-6801~5 Fax: +86-760-311-6806

HUA-DONG CHUAN LIH FA MACHINERY CO., LTD.

2Nd Unit, No. 2, Hsin Pu Rd, Hsin County,
Kwen Shan City, Jiang Xue Province, China
Tel: +86-512-8616-3268 Fax: +86-512-8616-3278



CHUAN LIH FA

